

**IMPORTANT!**

Please read this guide thoroughly before beginning installation. It is strongly recommended that installation be performed by at least 2 people. Failure to do so may result in product damage and / or personal injury. Please save these instructions for disassembly or reconfiguration.

IMPORTANTE!

Leggere interamente questa guida prima di iniziare l'installazione. Si raccomanda vivamente che l'installazione sia effettuata da almeno 2 persone. Una negligenza può causare danni al prodotto e/o lesioni personali. Conservare questa istruzione queste istruzioni per lo smontaggio o la riconfigurazione.

IMPORTANT!

Veuillez lire ce guide en entier avant de commencer l'installation. Il est fortement recommandé qu'au moins deux personnes réalisent l'installation. Le non-respect de cette consigne risque d'endommager le produit et / ou d'entraîner des blessures corporelles. Veuillez conserver ces instructions pour le démontage ou la reconfiguration.

WICHTIG!

Bitte lesen Sie dieses Handbuch sorgfältig, bevor Sie mit der Installation beginnen. Es wird stark empfohlen, dass die Installation von zwei Personen durchgeführt wird. Wird dieses versäumt, kann dieses zu Produkt- und/oder Personenschaden führen. Bitte bewahren Sie diese Anleitung für Abbau oder Neukonfiguration auf.

BELANGRIJK!

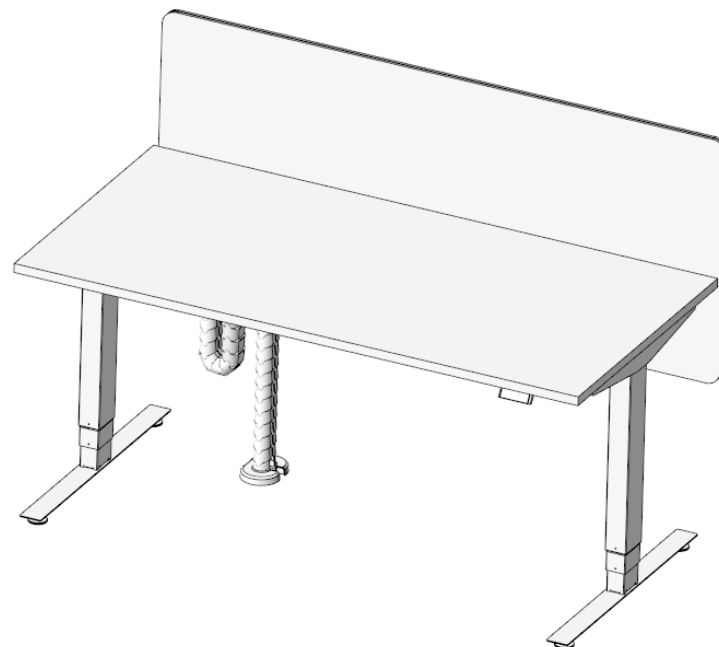
Lees deze handleiding vóór de installatie zorgvuldig door. De installatie dient bij voorkeur door ten minste twee personen te worden uitgevoerd. Indien dit niet gebeurt, kan dit leiden tot schade aan het product en/of persoonlijk letsel. Bewaar deze instructies voor demontage of herconfiguratie.

ATENCIÓN

Lea detenidamente esta guía antes de comenzar la instalación. Se recomienda encarecidamente que la instalación se lleve a cabo entre dos personas como mínimo. De lo contrario, se podrían ocasionar daños en el producto o lesiones corporales. Guarde las instrucciones de uso para el desmontaje o la reconfiguración del producto.

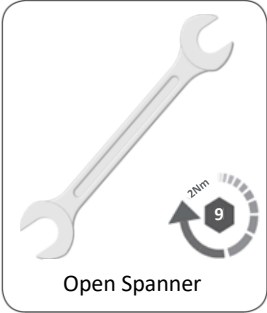
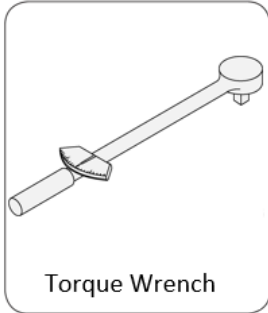
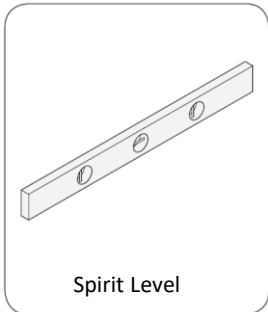
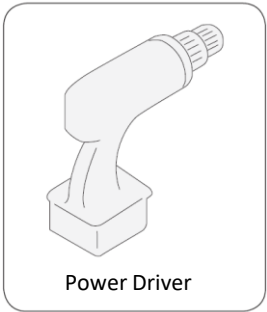
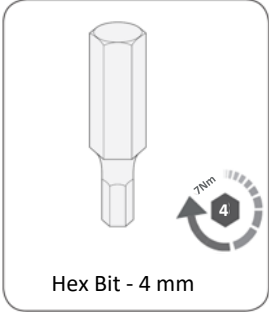
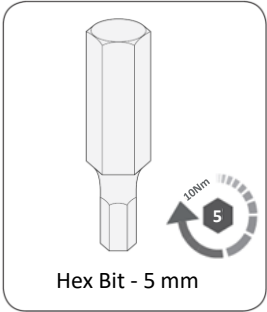
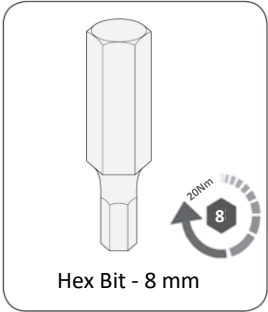
Nevi®

Installation Guide

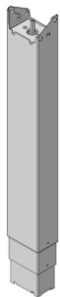


Contents	Page
Assembly Tools	1
Parts Included	2
Leg & Foot	3
E-Beam	3
Worktop Support	3
Work Surface	4
Control Box & Controller Switch	4
Cable Tray & Bracket	5
Umbilical	6
Screen & Screen Bracket	6
Cable Routing	7
General Notes & Trouble Shooting	8
Display Guide	9
Click Codes of Controller	10

Assembly tools



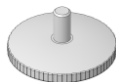
Parts Included



A
LEG



B
Foot



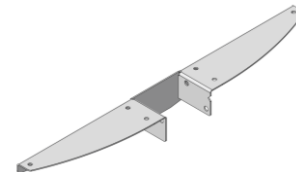
C
Glide



D
M10 x 16
Soc Head
Screw



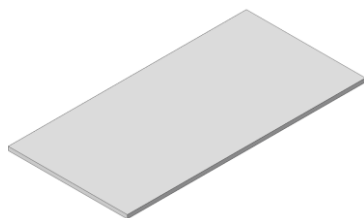
E
E-Beam



F
Worktop
Support



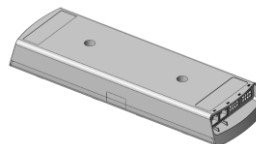
G
M8 x 14
Button Head
Soc Screw



H
Work Surface



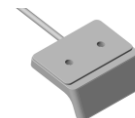
J
M6 x 16
SOC FLANGE
Head Screw



K
Control Box



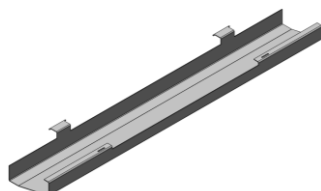
L
M5 x 20
Pan Head
Spax Screw



M
Controller
Switch



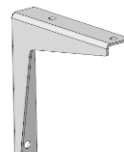
N
Cable Tray
Bracket



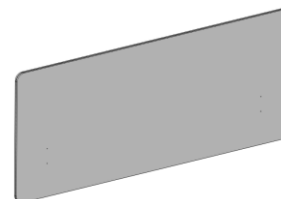
P
Cable Tray



Q
Umbilical Riser



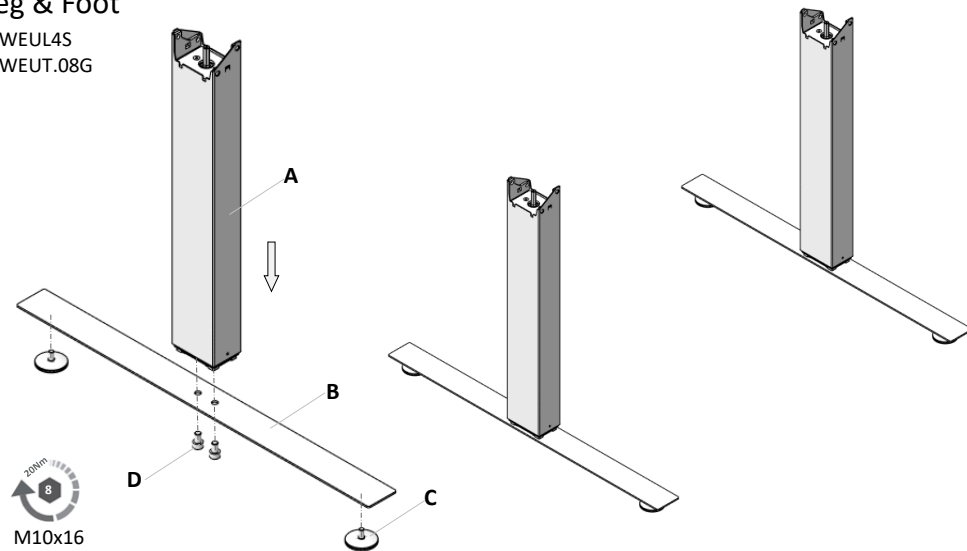
R
Screen
Bracket



S
Screen

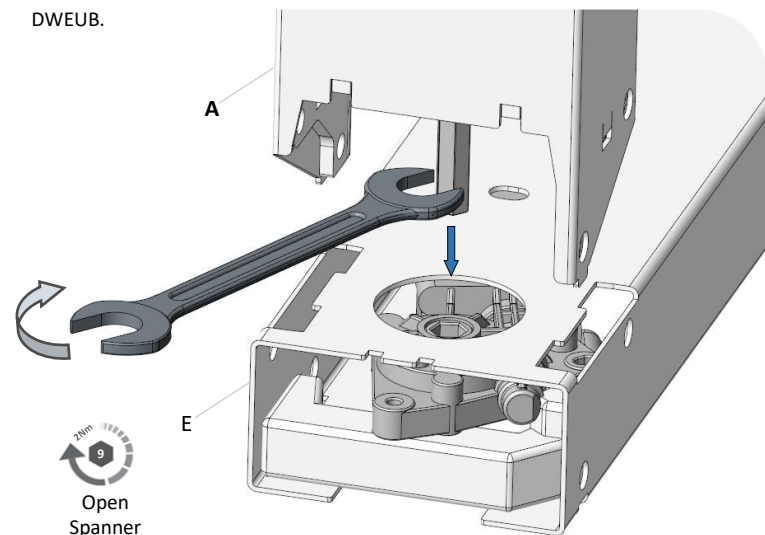
Leg & Foot

DWEUL4S
DWEUT.08G



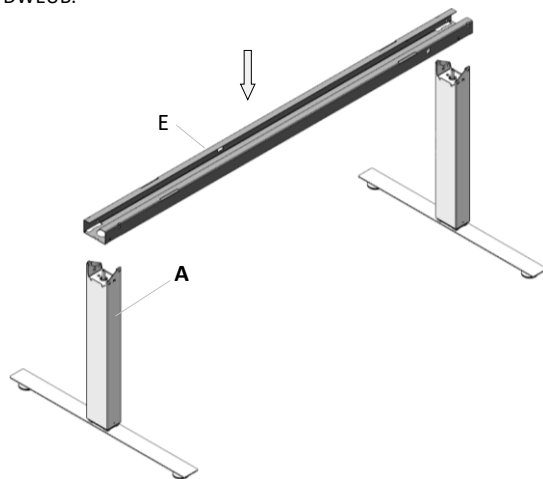
E-Beam

DWEUB.



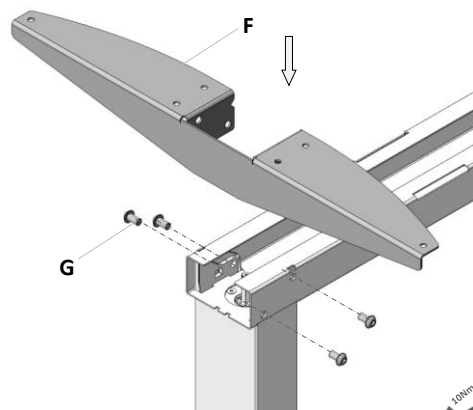
E-Beam

DWEUB.

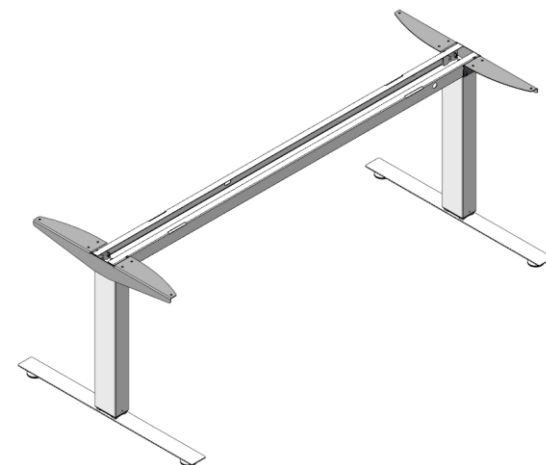


Worktop Support

DWEUW.08

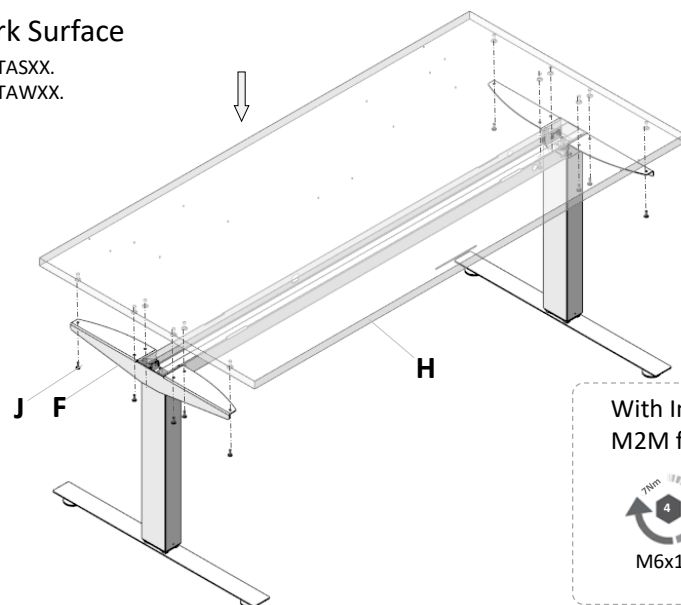


10Nm
5
M8x14



Work Surface

DWETASXX.
DWETAWXX.



With Insert
M2M fixing

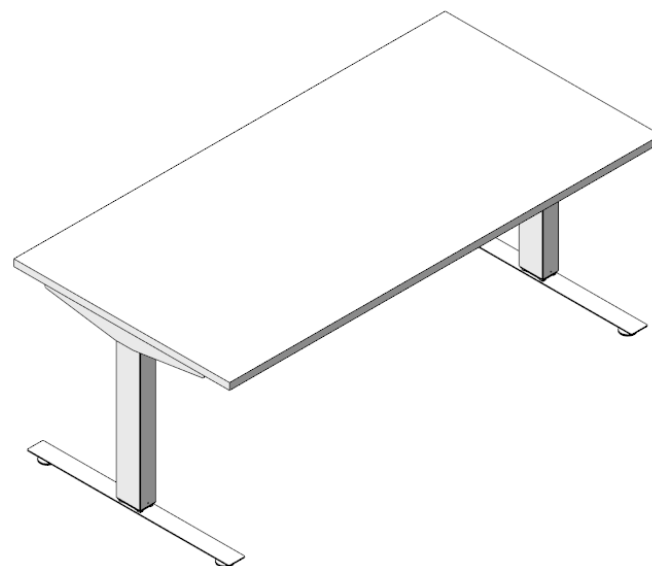


M6x16

With out Insert
Direct fixing

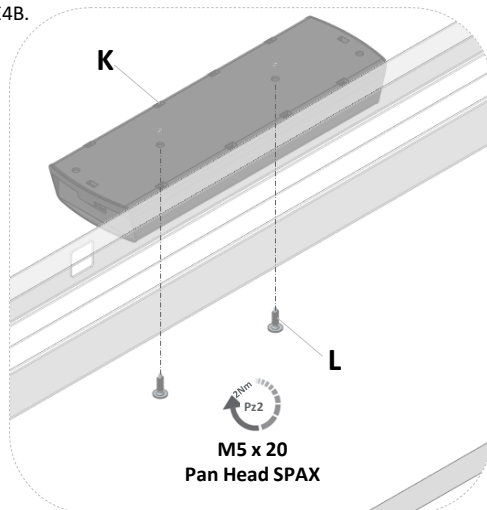


M5 x 20
Pan Head SPAX

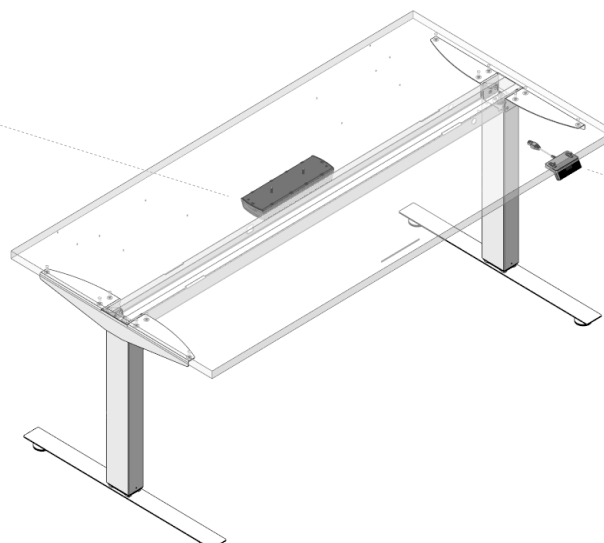


Control Box

DWEUCE4B.

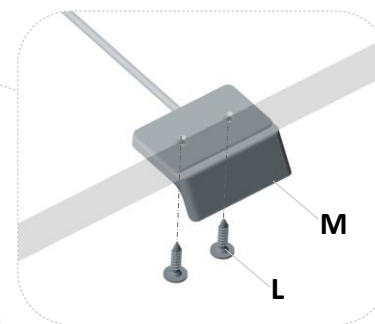


M5 x 20
Pan Head SPAX



Controller Switch

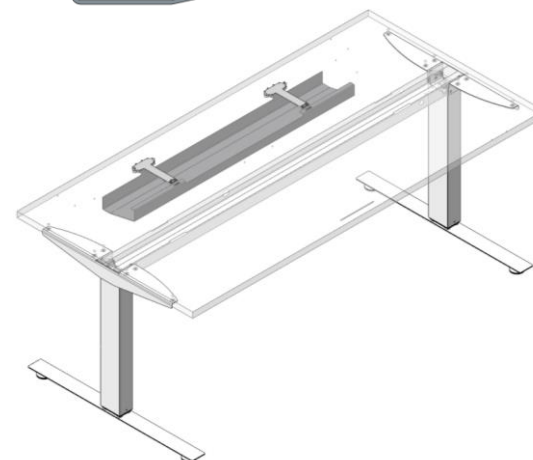
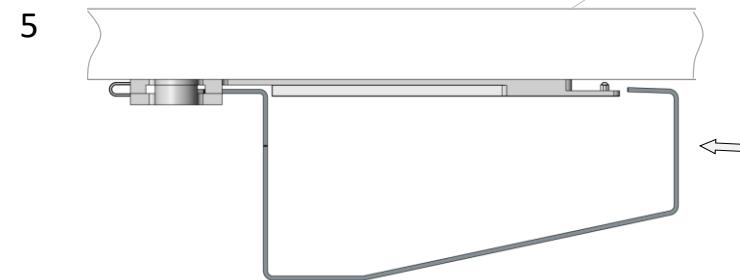
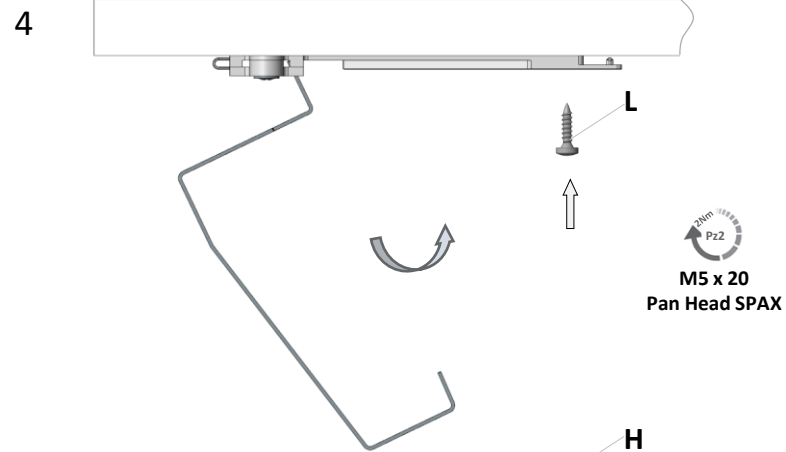
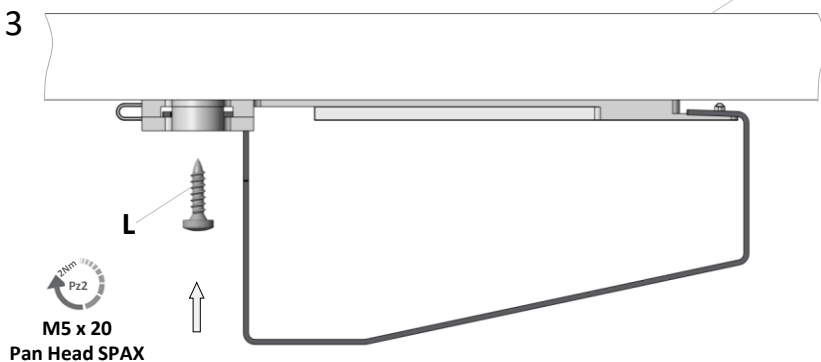
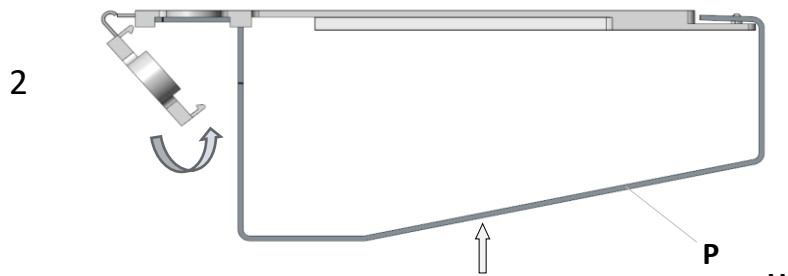
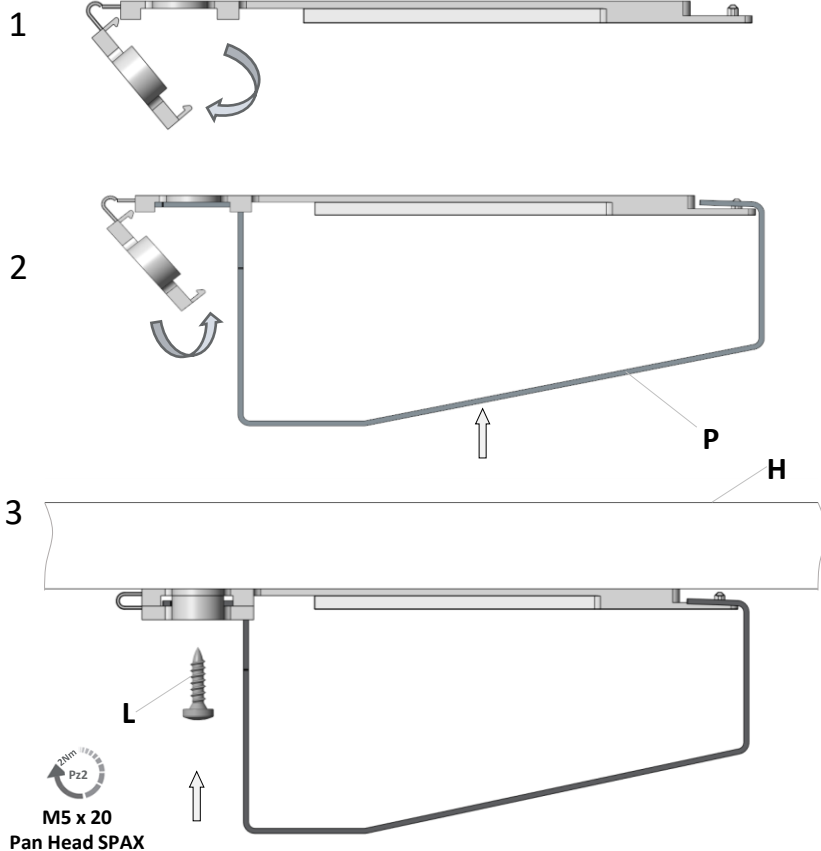
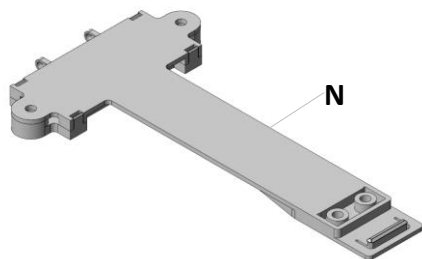
DWEUCE4B.



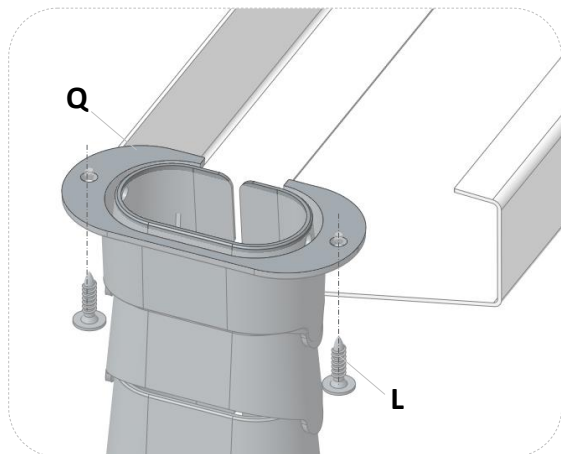
M5 x 20
Pan Head SPAX

Cable Tray & Bracket

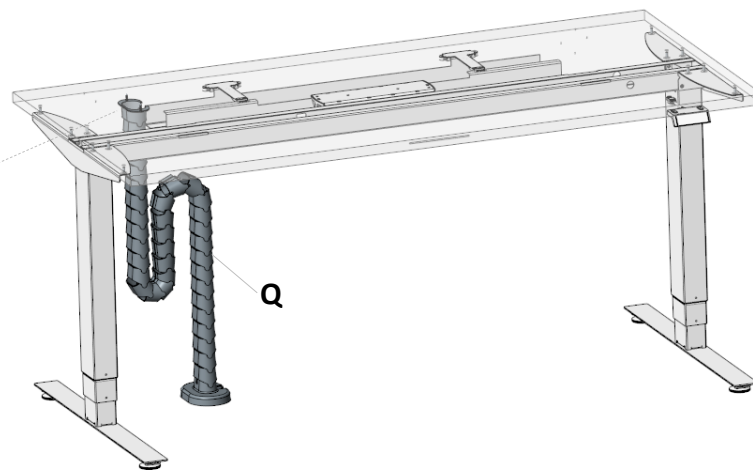
DWEWTS
DWEUCE4B.



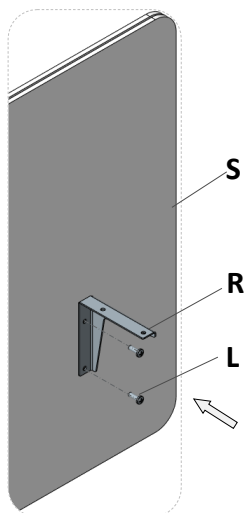
Umbilical RY3WU4.



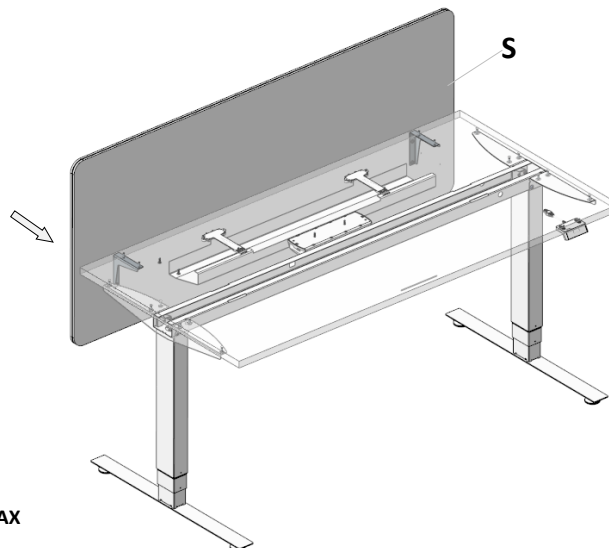
20mm
Pz2
**M5 x 20
Pan Head SPAX**



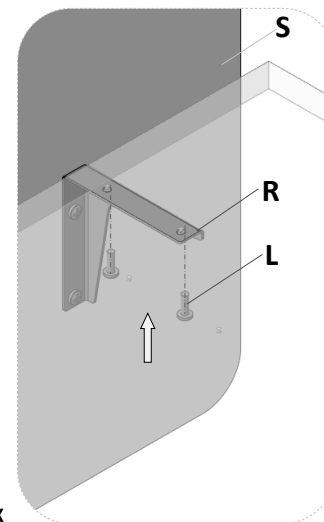
Screen & Screen Bracket DWEVNNS. RY3SM.



20mm
Pz2
**M5 x 20
Pan Head SPAX**

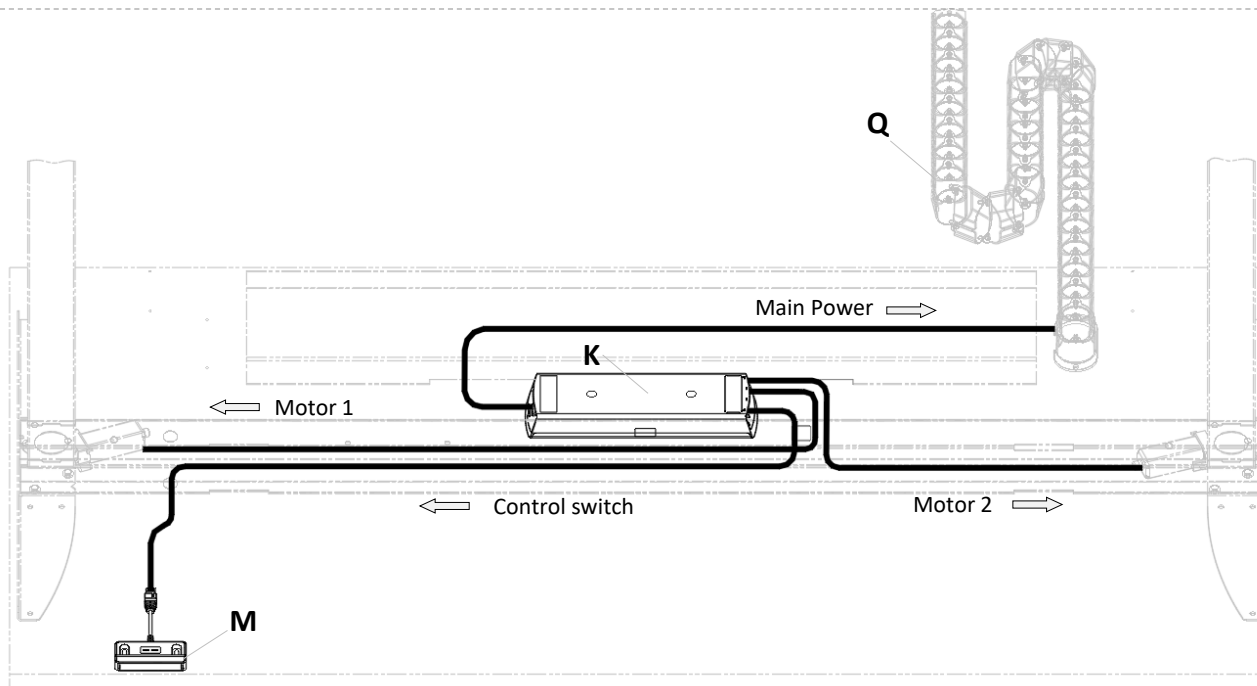


20mm
Pz2
**M5 x 20
Pan Head SPAX**



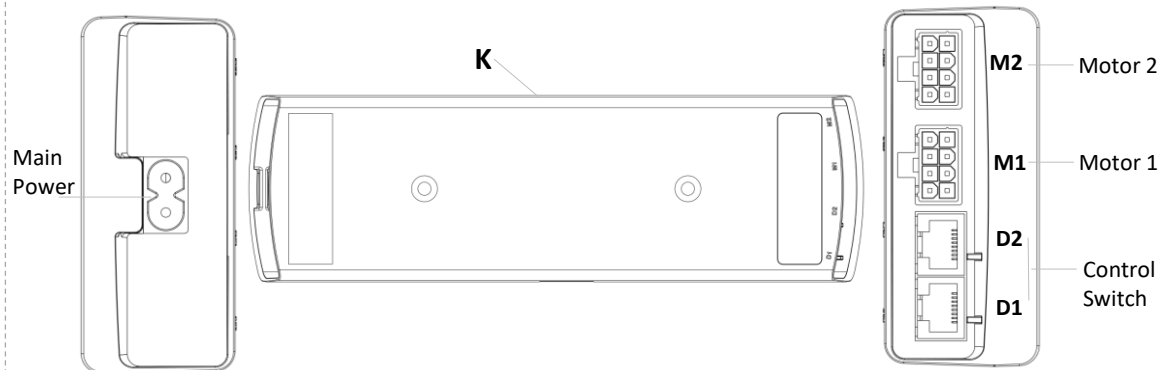
Cable Routing

DWEUCE4B.



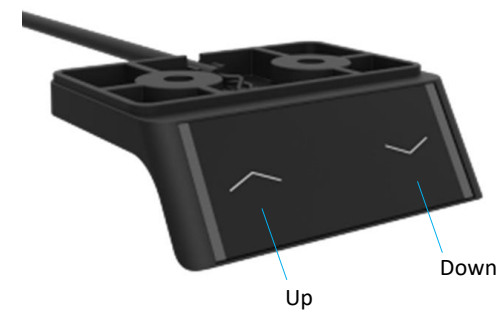
Control Box

DWEUCE4B.



Controller Switch

DWEUCE4B.



Notes

General notes on Electric Sit stand desk

Nevi's electrically operated desks allows for continuous height adjustment of the Worksurface from 650mm-1250mm above floor level at a speed of 38mm per second.

The desk must be connected to a suitable mains (240V) voltage supply using a Herman Miller power entry cord appropriate to the country of use.

Any cables that rise and fall with the work surface must be of sufficient length to ensure that no strain is placed upon the cables or their connectors to other apparatus. Similarly the cables must not interfere with the operation of the desk.

IMPORTANT: PLEASE ENSURE THAT THERE IS NO OBSTRUCTION TO THE MOVEMENT OF THE MECHANISM OR WORKSURFACE.

Nevi should be installed with a minimum safety gap of 25mm between each of the non-user edges and any adjacent hard surface i.e.: building walls, storage units, other desks etc. throughout the range of the user adaptable products. Screen brackets are designed to ensure there is a safety gap.

The electronic mechanism is designed to European safety standards with a cut out to ensure the motors do not over heat. The desk will move freely up and down for 2mins at which time the operation will cease and the mechanism will require a full 20mins rest time before continuing. If the mechanism is pressed after only 10mins rest the desk will work for only 1min continuous use and so on.

Troubleshooting

Fault	Cause	Repair
Desk does not move	No power supply	Plug in mains cable; if applicable, check the plug connector on the controller.
	No connection or loose connection to the drives/side panels	Check, if applicable fix plug connector connection from the motor cable to the controller and the drives.
	No connection to the hand-switch	Check, plug-in plug connector to the controller.
	Max. lifting force exceeded	Reduce weight.
	Max. operating time exceeded	The controller will independently reactivate after approx. 3 minutes. ATTENTION! The max. travel time of 2 minutes is only available after an idle time of at least 18 minutes.
	Drive defective	Please contact Customer Service.
	Controller defective	Please contact Customer Service.
Desk only lowers slowly	Controller expects a reinitialisation	See Section 5 Reinitialization.
Desk only moves slowly	Max. lifting force exceeded	Reduce weight.
Desk only moves briefly on one side and then remains stationary	No connection or loose connection to the drives/side panels	Check, if applicable fix plug connector connection from the motor cable to the controller and the drives.
	Drive defective	Please contact Customer Service.

Table 1: Behaviour in case of failure

Error messages in the display of the hand switch (Optional)

Display	Description	Remedy
[01]	Short-circuit motor 1	Pull the mains plug. Correct the external short-circuit, check the cables to the motors for damage or connect the correct motor to the relevant socket. Start the controller again. If required, carry out a reference movement.
[02]	Short-circuit motor 2	
[11]	Cable of motor 1 was pulled	Check the plug/cable connection to the motors and carry out a reference movement.
[12]	Cable of motor 2 was pulled	Reduce weight.
[15]	No pulses measurable	Pull the mains plug. Correct the external short-circuit, check the cables to the motors for damage or connect the correct motor to the relevant socket. Start the controller again. If required, carry out a reference movement.
SP	System protection/ System pause The controller monitors the power-on duration (time-controlled) and its maximum temperature. One of the two values was exceeded.	Wait till the controller has cooled and the display "SP" goes off. There is now clearance for movement for 20s. Only after 18 minutes will the table move the full 2 minutes. ATTENTION! The power-on duration is calculated even if there is no mains voltage applied.
[0L]	Collision detected	
[34]	Overcurrent at motor 1	Collision? If required, rectify; max. load exceeded; remove the load from the table. Motor positions too much at variance; if required, reduce the load on the table. Carry out a reference movement.
[35]	Overcurrent at motor 2	
[38]	The motors have lost sync.	Motor positions too much at variance; if required, reduce the load on the table. Carry out a reference movement.
[39]	The controllers are out of sync (cascading).	Check whether the cascading cable between the controllers is correctly inserted and that there is a mains cable in both controllers. Carry out a reference movement.

Display	Description	Remedy
[40]	Sensor module error	Further movements are possible, but without anti-collision protection. Inspect the sensor module.
[51]	Contradictory operations on two different controller devices.	Stop operation at all the available controller devices.
[52]	The "Up" key on the hand switch is stuck.	Replace hand switch.
[53]	The "Down" key on the hand switch is stuck.	Replace hand switch.
[81]	Voltage too small	Pull the mains plug. Contact Customer Service. Mains or power supply fluctuations?
[82]	Voltage too high	
[83]	Discrepancy in the parameters	The parameters in one controller do not match the number of legs or the parameters are not the same in the two controllers. Contact Customer Service and have the parameter set of the table checked.
REF	Reference movement required.	Carry out a reference movement.
001-999	The table moves	

Table 2: Error descriptions (Engine = drive in the mounting leg or in the side frame)



NOTE

If there is a power failure during the height adjustment or if the mains cable is pulled, a manual reset might be necessary.

If the error cannot be repaired as described above, pull the mains plug, wait for several minutes and try to reinitialise the desk. If the error continues to occur, unplug the desk from the mains and contact customer service. This error list refers to firmware A1.2 and higher.

Click codes of the Controller

As soon as the motor controller is supplied with power, the controller uses the integrated relay to acoustically inform the user about the system status and the reason for the most recent shutdown.

Click = Relay actuated, Clack = Relay dropping

Number of click-clacks	When	Status Information
1x	If the mains is on	Normal operation: The system works without any problem.
1x	Up key pressed	Reset: Initialisation movement required
7x	During the movement, the connection to a drive is lost.	Error: Table cannot be moved any more
2x	Setting a container- or shelf-stop	Confirmation of the limit position having been successfully saved (only with the simple hand switch without a display)
4x	Delete container- or shelf-stop.	Confirmation of the limit position having been successfully deleted. (only with the simple hand switch without a display)
7x	Table moves at an angle	Error: The drives do not have the same height, initialisation movement required

Illustrations and specifications, where shown, are based on the latest product information available at the time of publication. The right is reserved to make changes to design and specification at any time, without notice, and also to discontinue products. Full conditions of sale are stated, together with final pricing, on our confirmation of order, and are available separately by request.

Illustrazioni e descrizioni particolareggiate, ove presenti, sono basate sulle informazioni più recenti relative al prodotto disponibili al momento della pubblicazione. Ci riserviamo il diritto di apportare in qualsiasi momento modifiche senza preavviso a modelli e caratteristiche, come pure di interrompere la produzione. Le condizioni di vendita complete sono riportate, insieme al prezzo finale, nella nostra conferma d'ordine e sono disponibili a parte su richiesta.

Les illustrations et les caractéristiques figurant dans le guide reposent sur les toutes dernières informations du produit, disponibles au moment de la mise sous presse. Nous nous réservons le droit d'apporter des modifications à la conception et aux caractéristiques à tout moment, sans préavis, et de ne pas suivre les produits. Toutes les conditions de vente sont indiquées, ainsi que les prix finals, sur notre confirmation de commande, et sont disponibles séparément sur demande.

Abbildungen und Spezifikationen, wo gezeigt, sind auf der neuesten Produktinformation, die zum Zeitpunkt der Veröffentlichung erhältlich war, basiert. Wir behalten uns das Recht vor, Design und Spezifikation jederzeit ohne Vorwarnung zu ändern und auch die Herstellung von Produkten einzustellen. Unsere vollständigen Verkaufsbedingungen finden Sie, zusammen mit dem Endpreis, auf unserer Auftragsbestätigung, und sind auf Anfrage auch separat erhältlich.

Eventuele afbeeldingen en specificaties zijn gebaseerd op de meest recente informatie beschikbaar ten tijde van publicatie. We behouden ons het recht voor het ontwerp en de specificatie te allen tijde te wijzigen, zonder voorafgaande kennisgeving, en daarnaast een productlijn te beëindigen. De uitgebreide verkoopvoorwaarden staan samen met de uiteindelijke prijs vermeld op onze orderbevestiging en zijn op aanvraag afzonderlijk verkrijgbaar.

Las ilustraciones y especificaciones que aparezcan en la guía estarán basadas en la información más reciente que se tenga sobre el producto en el momento de la publicación. Se reserva el derecho a modificar el diseño y las especificaciones en cualquier momento, sin previo aviso, así como de interrumpir la producción de determinados productos. Las condiciones de venta se encuentran disponibles, junto con el precio final, en nuestra confirmación de pedido; también se podrán solicitar por separado.